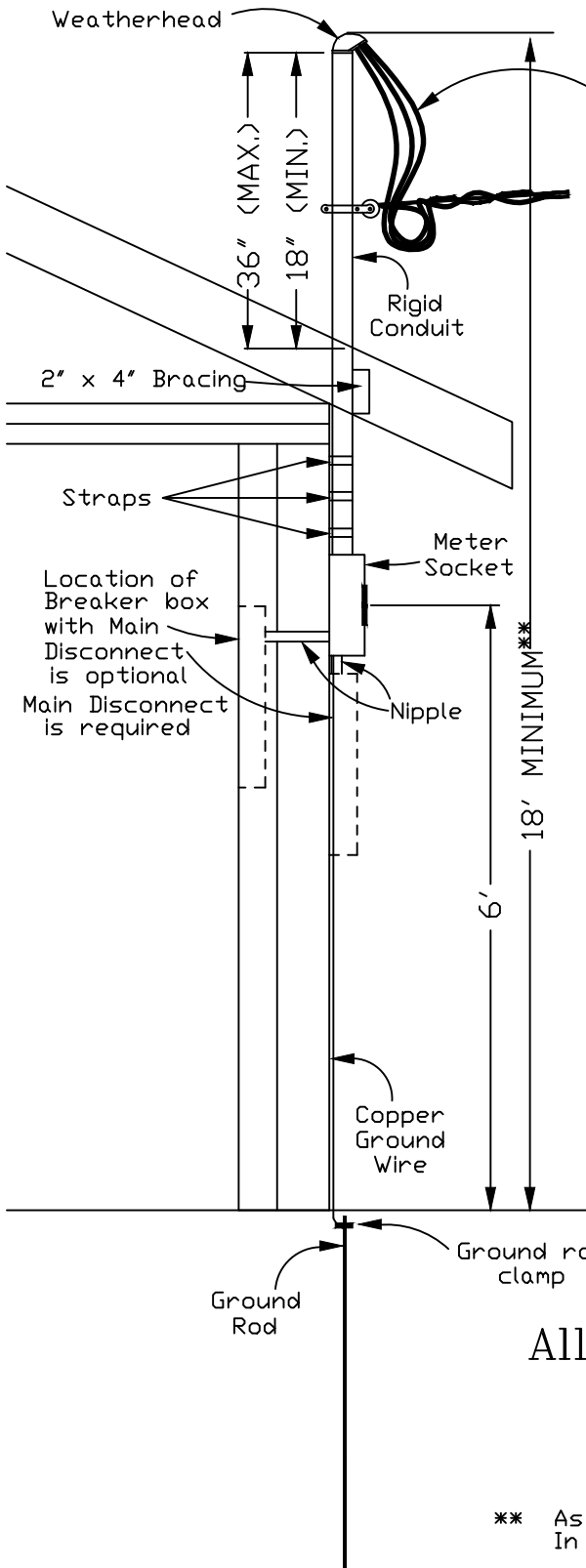


**JNEC SPECIFICATIONS  
FOR  
HOUSE LOOP  
MAST SERVICE**



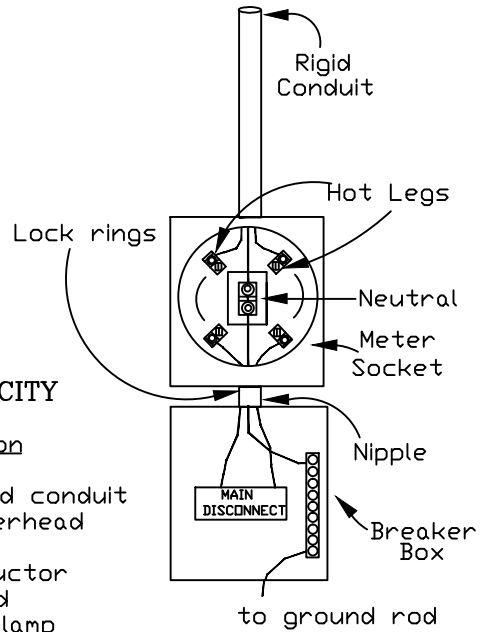
Conductor should extend 18" past weatherhead. Neutral must be identified.

**100 AMP CAPACITY**

Qty.	Description
1	12' 1 1/2" Rigid conduit
1	1 1/2" Weatherhead
3	1 1/2" Straps
	#4 THW Conductor
1	8' Ground rod
1	Ground rod clamp
	Neutral & Ground Conductor must be #6 or larger copper (solid or stranded)
1	100 Amp Breaker box with Main disconnect required
1	1 1/2" Nipple (from meter socket to breaker box)
4	1 1/2" Lock rings
1	100 Amp meter socket with 1 1/2" hub (furnished by Coop.)

**200 AMP CAPACITY**

Qty.	Description
1	12' 2" Rigid conduit
1	2" Weatherhead
3	2" Straps
	2/0 THW Conductor
1	8' Ground rod
1	Ground rod clamp
	Neutral & Ground Conductor must be #4 or larger copper (solid or stranded)
1	200 Amp Breaker box with Main disconnect required
1	2" Nipple (from meter socket to breaker box)
4	2" Lock rings
1	200 Amp meter socket with 2" hub (furnished by Coop.)



**All Wires Leaving Breaker Box  
MUST BE IN  
Electrical Conduit**

\*\* As required by NESC Section 23 Article 232  
In some cases a reduced clearance of 12' may be allowed  
last revised 03/07/12